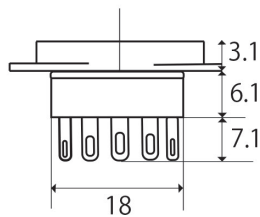
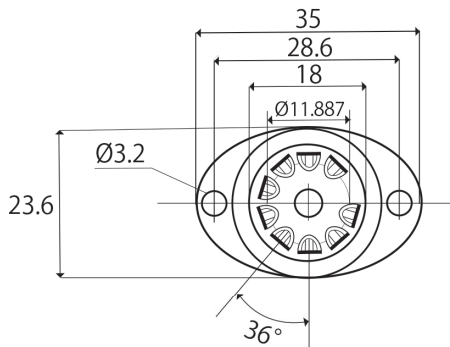
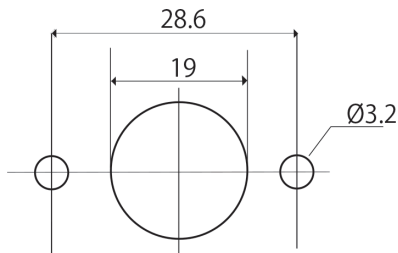


S-7Am / S-7Am-P / S-7Am-P-GP 9 Pin Tube Socket

Features

- Fine Ceramic of Alumina 95% for socket base
Thermal conductivity is exceptionally higher than the average ceramic socket base made of steatite.
It restrains the increase of temperature and contributes to longer life.
- New method of direct gold plating
Gold plating directly on the phosphor bronze without using nickel ground lowers magnetic distortion and achieves ideal quality for audio (for S-7Am, S-7Am-P-GP)
- Suitable for variety of 9-pins MT tubes (12AX7/12AU7, ECC83 and others)
- RoHS compliant

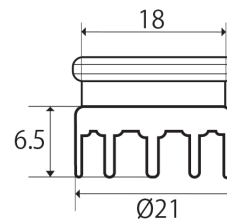
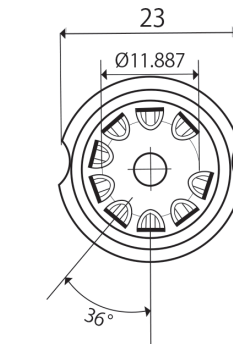
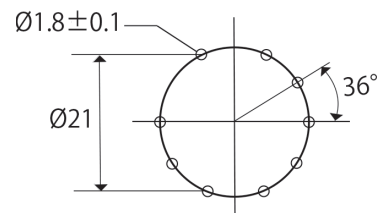
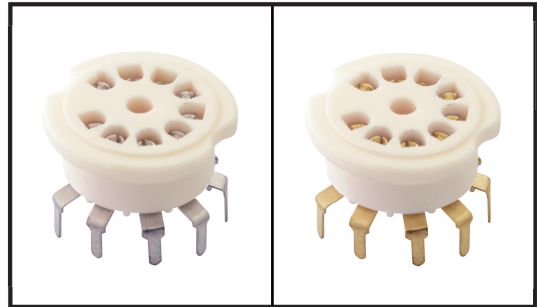
S-7Am



Unit (mm)

S-7Am-P

S-7Am-P-GP



Unit (mm)

• Specifications are subject to change without prior notice.
• ©2021 Amtrans Corporation. All rights reserved.

Amtrans Corporation

