



FURUTECH
PURE TRANSMISSION

AEx
オーディオ銘機賞
Audio Excellence Award 2008



High Performance IEC INLET



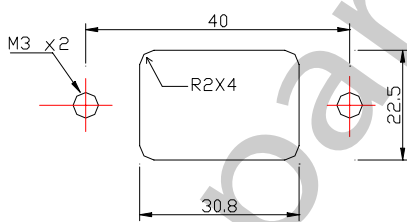
AC Inlet(R) Rhodium Plated
FTECH-65010

AC Inlet(G) 24k Gold Plated
FTECH-65013

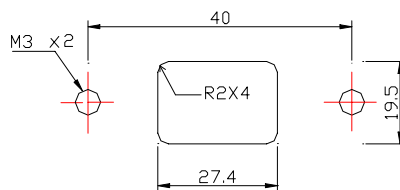
Type: 2-pole+earth 15A 125V/10A 250V A.C.

- α (Alpha) Eutectic (low temperature) cast copper alloy conductor
- PBT and fiberglass housing
- Connections: Soldered
- Dimensions: 49.45mm (W) x 22.0mm (D) x 27.1 mm (H)
- Rated: 15A/125V ,10A/250V

Panel Cut-out Size for A.C. Inlet



FOR REAR
MOUNTING USE



FOR FRONT
MOUNTING USE

All metallic parts are treated with the

*FURUTECH α (Alpha) Process (Super Cryogenic & Demagnetizing Treatment.)

FURUTECH CO., LTD.

service@furutech.com

Make A More Powerful Connection with Furutech!