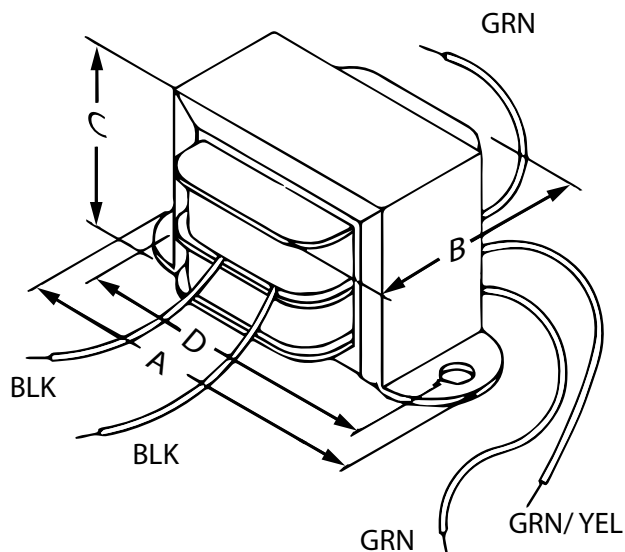




## Power Transformer - Low Voltage/ Filament Economical Single Primary - Open Style Chassis Mount

### Features



- Economical single primary 115 VAC, 60 Hz. (or 117 50/60 Hz. see table below)
- Open style, channel bracket, chassis mount.
- Minimum 6" long leads.
- Dual bobbin design - no electrostatic shield required.
- Class B insulation (130 degrees, C) for extra protection - **UL listed** as a Class A (105 degree, C) design
- Hi-Pot test of 2,000V RMS.
- **CSA certified.**

Overall Dimensions (in. / mm)	
A	4.03 / 102.4
B	2.5 / 63.5
C	2.63 / 66.8
Hole to Hole Mounting Dims	
D	3.56 / 90.4
E	/
Mounting Hole Sizes	
Width-wise	0.187 / 4.7
Depth-wise	/
Electrical	
Size (VA)	80
Primary	115V 60 Hz.
Secondary VAC	10 C.T.
Secondary Amps	8

